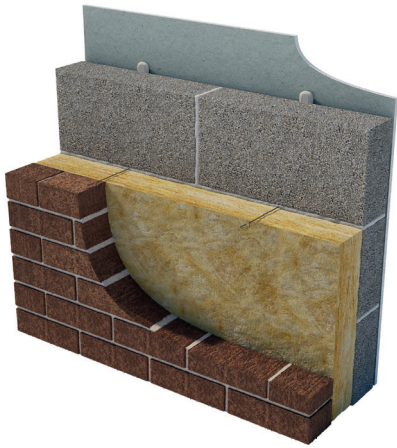


Superwall 36 Cavity Wall Batt

Typical application: External masonry cavity walls



Description

Superglass Superwall 36 is a British Board of Agrément (BBA) approved, non-combustible and water repellent glass mineral wool insulation cavity wall batt. The flexible batt is supplied at 455mm wide to allow easy installation between standard vertical wall tie spacings and minimum on-site cutting and waste.

Application

Superglass Superwall 36 is designed to provide thermal insulation in full or partial fill in new external masonry cavity walls, up to 25 metres in height for full fill and without restriction for partial fill, in new buildings of a domestic and non-domestic nature (additional requirements apply for buildings above 12 metres in height for full fill and above 25 metres in height for partial fill). Superwall 36 is BBA approved for use in all UK exposure zones (subject to conditions detailed in the BBA Certificate and NHBC Standards).



BRE Green Guide Rating

Superwall 36 has a generic BRE Green Guide Rating of A+.



Fire Performance

Superwall 36 has a fire classification of A1 (the highest possible rating) when tested to BS EN 13501-1 Reaction to Fire.



Thermal Insulation

Superwall 36 has a thermal conductivity of 0.036W/mK.



Recycled Content

Superwall 36 is manufactured from up to 84% recycled glass.



Easy & Quick To Install

Manufactured to allow for quick and easy installation.



Superwall 36 | Characteristics

Product dimensions and information							
Thickness (mm)	Length (mm)	Width (mm)	Batts per pack	Pack Area (m ²)	R-Value (m ² K/W)	Packs per pallet	Code
50	1200	455	16	8.736	1.35	30	5267C1*
75	1200	455	10	5.460	2.05	30	5269C1
85	1200	455	8	4.368	2.35	30	6270C1*
90	1200	455	8	4.368	2.50	30	6114*
100	1200	455	8	4.368	2.75	30	5271C1
125	1200	455	6	3.276	3.45	30	6272C1
150	1200	455	6	3.276	4.15	30	5273C1

Please note all dimensions are nominal

*Non-Standard Products

Thermal Performance

Superwall 36 has a declared thermal conductivity of 0.036W/mK.

Fire Performance

All Superglass products are deemed non-combustible and have a fire classification of A1 (the highest possible rating) when tested to BS EN 13501-1 Reaction to Fire.

Environment

- Manufactured in accordance with ISO 14001 - Environmental Management Systems (EMS).
- Contains no ozone-depleting substances or greenhouse gases.
- Generic BRE Green Guide Rating of A+.
- A copy of the Environmental Product Declaration (EPD) can be downloaded from the Superglass website.

Recycled Content

All Superglass products are manufactured from up to 84% recycled glass which would otherwise go to landfill.

Standards

Manufactured in accordance with:

- BS EN 13162 Thermal insulation products for buildings - Factory made mineral wool (MW) products.
- BS EN 13172 Thermal insulation products - Evaluation of conformity.

Quality

All Superglass products are manufactured in accordance with BS EN ISO 9001 - Quality Management Systems (QMS).

Durability

All Superglass products are non-hygroscopic, will not rot, degrade or sustain vermin and will not encourage the growth of mould, bacteria or fungi.

NHBC Standards

In the opinion of the BBA, Superwall 36 Cavity Wall Batt, if installed, used and maintained in accordance with BBA Certificate 89/2231 Product Sheet 2, can satisfy or contribute to satisfying the relevant requirements in relation to NHBC Standards, Chapter 6.1 External masonry walls.

Water Resistance

Constructions incorporating the product and built in accordance with the Standards listed in section 4.4 of BBA Certificate 89/2231 Product Sheet 2, will resist the transfer of precipitation to the inner leaf and satisfy the national Building Regulations.

Vapour Resistance

All Superglass products offer negligible vapour resistance allowing vapour to pass freely through the insulation.

Handling & Storage

All Superglass products are easy to handle, cut and install. The products are supplied compression packed in polythene to provide short term protection only. For long term protection, the product must be stored indoors, or under a waterproof covering and off the ground to protect from weather damage. The products should not be left permanently exposed to the elements.

Certification

- UKCA & CE Mark certified to BS EN 13162:2012+A1:2015.
- A copy of the product Declaration of Performance (DoP) can be downloaded from the Superglass website.



Superglass Insulation Limited. Thistle Industrial Estate, Kerse Road, Stirling, Scotland FK7 7QQ

Technical

Hotline: **0808 1645 134**

Email: **technical@superglass.co.uk**

Customer Service

Tel: **01786 451170**

Email: **customerservice@superglass.co.uk**

Social

www.twitter.com/Superglass_UK

www.linkedin.com/company/superglassuk/

All rights are reserved, including those of photomechanical reproduction and storage in electronic media. Commercial use of the processes and work activities presented in this document is not permitted. Extreme caution was observed when putting together the information, texts and illustrations in this document. Nevertheless, errors cannot quite be ruled out. The publisher and editors cannot assume legal responsibility or any liability whatever for incorrect information and the consequences thereof. The publisher and editors will be grateful for improvement suggestions and details of errors pointed out.